



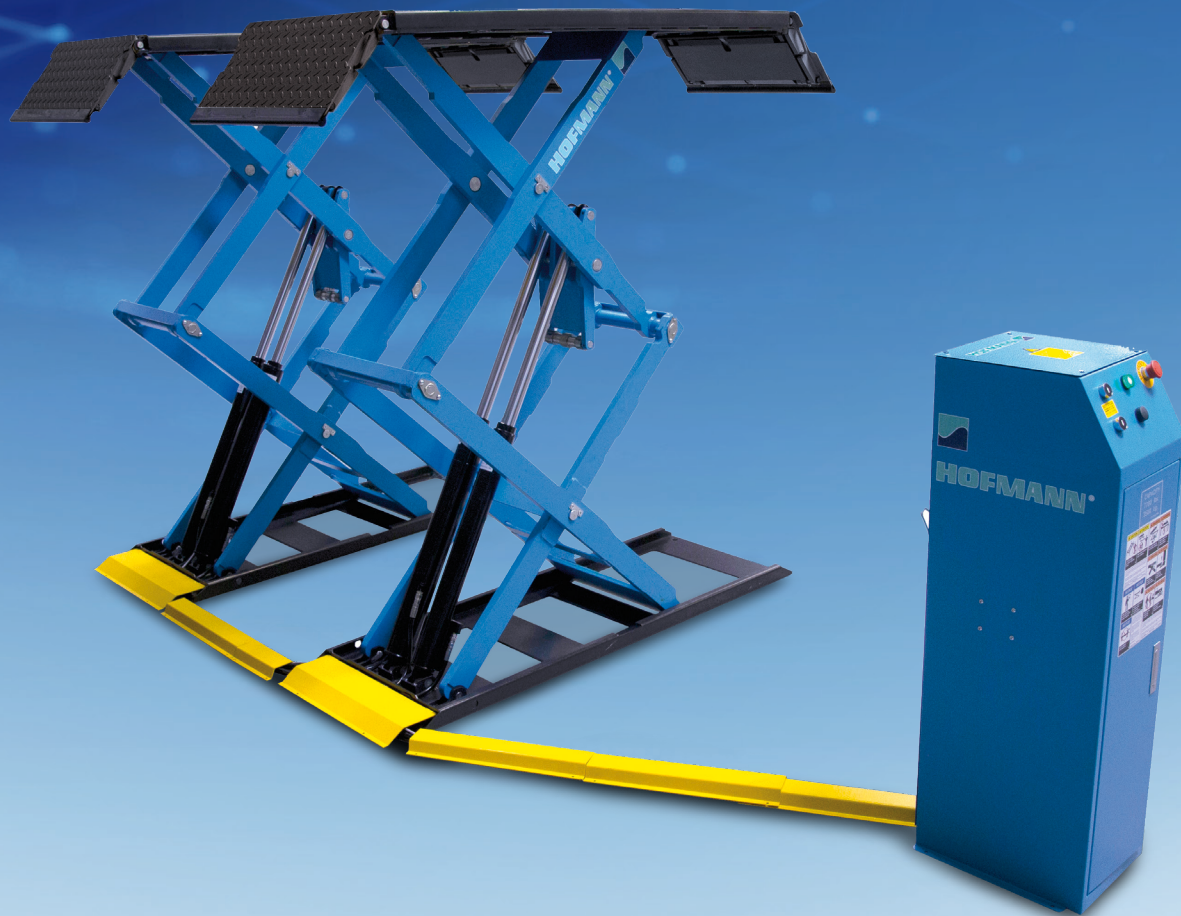
variolift® 3500



SERVICE LIFTS

ENGINEERING UNLEASHED™

THE DOUBLE SCISSOR LIFT IS AN ESSENTIAL TOOL FOR LIFTING AND SERVICE OPERATIONS IN WORKSHOPS. THE LIFT CAN BE INSTALLED AS SURFACE MOUNTED OR FLUSH MOUNTED PROVIDING EASY DRIVE-OVER IN CUSTOMER SERVICE RECEPTION BAYS.



HYDRAULIC SYSTEM

Master / Slave system avoids the need of compressed air to mechanically lock / unlock the scissor structure. With two independent hydraulic circuits for a safe and controlled lowering. Cylinders are equipped with internal flow control valves.



DRIVE-ON RAMPS

Used as platform extension (330 mm each side) with easy lock / unlock positioning. The ramps hinge down and away 54 degrees, allowing additional access for wheel servicing.



CONTROL UNIT

Compact console control station protects key electrical components, hydraulic power pack & hydraulic synchronisation controls.

DOUBLE SCISSOR LIFT

STRUCTURE

Strong and rugged steel structure. One of the strongest double scissor lifts in the market with 3.500 kg lifting capacity. Chrome-plated pivot pins and fibre wound bushings increase performance life. No need to lubricate.



OPTIMUM SAFETY

CE stop and audible alarm for feet protection at app. 150 mm height from floor.

PLATFORM DESIGN

Adjustable lifting platforms with locking ramps. Adjustable from 1.480 mm to 2.140 mm to accommodate longer wheelbase vehicles.



PLATFORMS

Low drive over height of 116 mm allows also vehicles with low chassis to drive on the lift comfortably without damage to the lower car frame. Rise height 1.905 mm.

THE PERFECT SOLUTION FOR:

TYRE SERVICE SHOPS

Bundled with wheel balancer and tyre changer. Can also be used as repair bay outside of tyre season.

REPAIR SHOPS

Ideal for brake, exhaust, oil and other services.

CAR DEALERSHIPS

Used as reception bay, ideal for brake, exhaust, oil and tyre services.

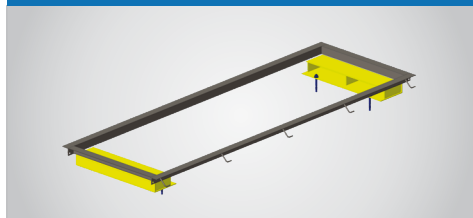


In perfect combination with wheel balancers and tyre changers

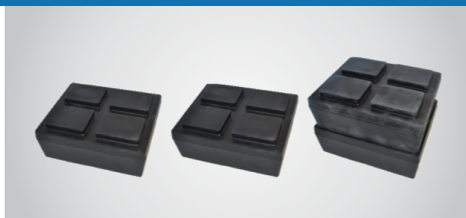
TECHNICAL SPECIFICATIONS

Lifting capacity (kg)	3.500
Lifting time at nominal load of 3500 kg (s)	48
Lifting height surface mount (mm)	1.905
Lifting height flush mount (mm)	1.790
Platform length (mm)	1.480
Ramp length (mm)	330
Overall Platform length (mm)	2.140
Platform width (mm)	651
Width between platforms (mm)	533 – 736
Drive over height (mm)	116
Power supply (V/Hz/A)	400V / 3ph, 50/60Hz
Air Supply	Not Required

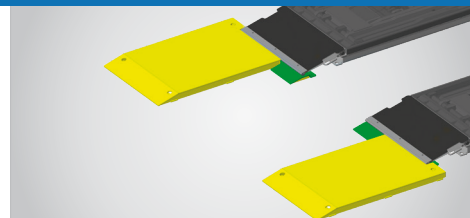
ACCESSORIES



FLUSH MOUNT KIT



STACKABLE INTERLOCKING PADS (1 SET OF 4)
1 KIT INCLUDED IN THE SCOPE OF DELIVERY



LOW PROFILE DRIVE-OVER RAMPS KIT

FIND A DISTRIBUTOR

AUSTRIA
+43 2641 24524

FRANCE
+33 134 48 58 78

GERMANY
+49 8671 96200 0

ITALY
+39 0522 733 411

